

SOLAR POWER AFRICA

BREAKAWAY SESSION 4

ASANTE PHIRI

16 February 2022

IN PARTNERSHIP WITH

**SOLAR
POWER**
EVENTS

POWERED
BY


SAPVIA
South African Photovoltaic Industry Association

SUPPORTED
BY

 **RMB**

 **GLOBELEQ**
POWERING AFRICA'S GROWTH

ORGANISED
BY

 **messe frankfurt**

Enel at glance



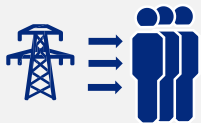
87 GW

of installed capacity
of which 55% renewable



207 TWh

of net production
of which 55% emission free



70 Million customers
23 Million Free Market



Global Utility

35 Countries
5 Continents



67,000 employees

among top 20 in Equileap
ranking for gender quality



2.2 Million km
distribution networks



6.4 GW
demand response



90,000
charging points



Financial Information 2020

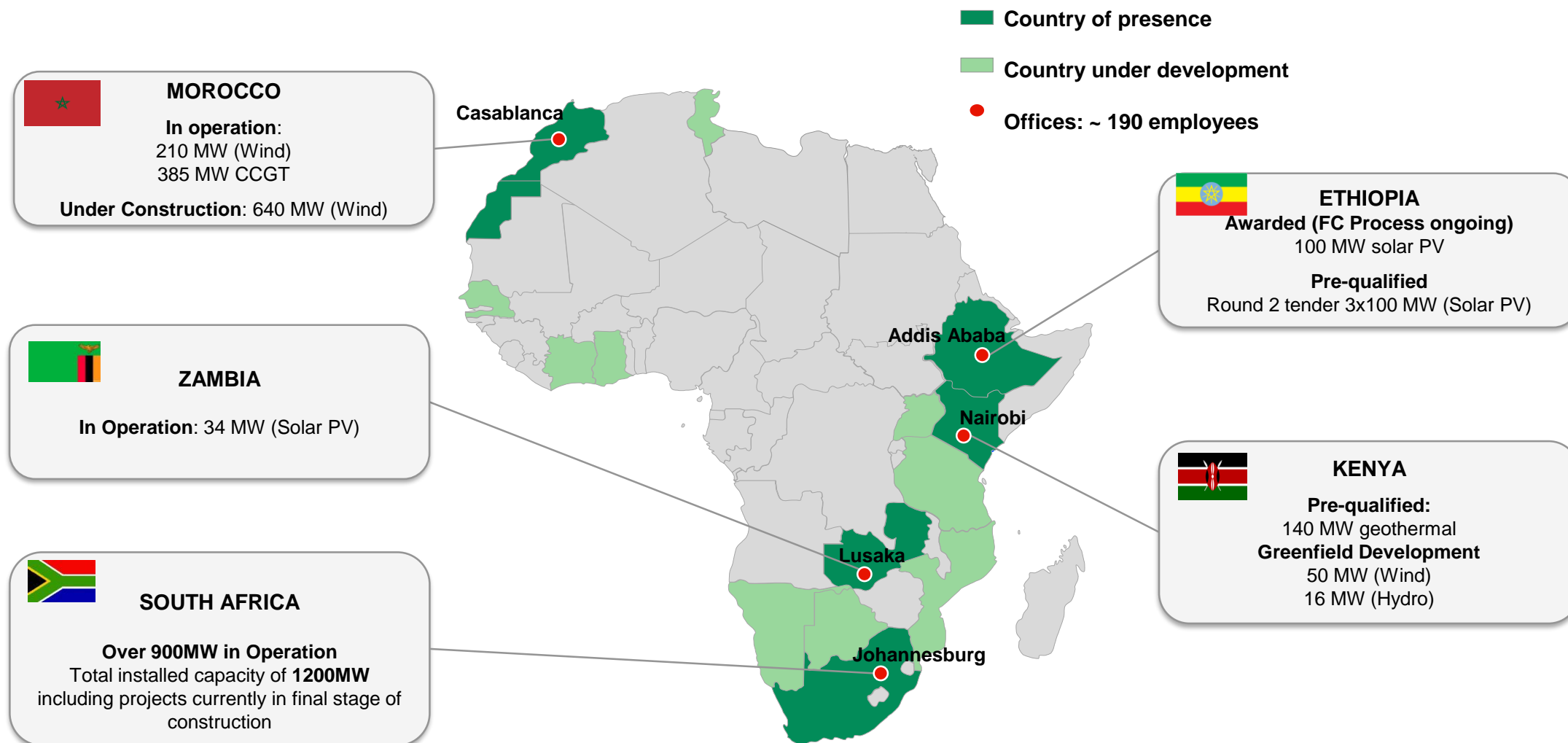


REVENUES
65 BN EUROS

EBITDA
17.9 BN EUROS

MARKET CAP. (Dec 2020)
84.3 BN EUROS

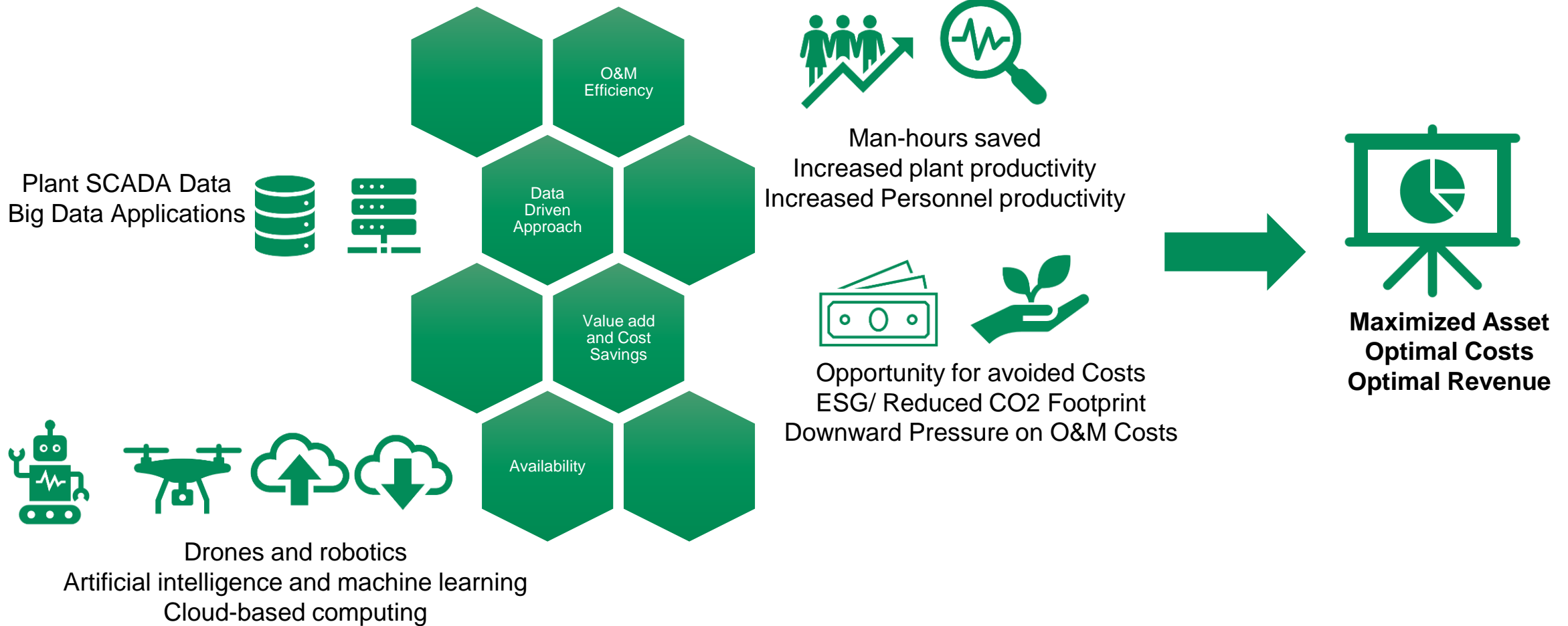
Enel Green Power Footprint in Africa



A large solar farm is shown at sunset. The solar panels are arranged in long rows, stretching into the distance. The sky is a mix of orange, yellow, and dark blue, with some clouds. In the bottom right corner, the Enel logo is visible, consisting of the word 'enel' in a stylized green font with a white outline, and the words 'Green Power' in a smaller green font below it. In the top left corner, there is a solid grey rectangular box.

Leveraging Technology for Effective and Efficient Operations and Maintenance

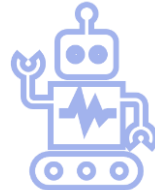
Drivers in the Adoption of Technology



Field Maintenance Technology



Drone Thermography
and AI for Data
Analysis



Robotised Grass Cutting
and Inspections



Robotised
module cleaning

Solar Anomaly Detection Tool - ROMAP

enel

Period: 2018-2020 | 2021 | Country: ZAF | Power Plant: UPINGTONSOLAR | Inspection: 24APR2021

Total images: 132

Anomaly score: 0.60 to 1.00

Type of Anomaly	Number of Anomalies
String	64
Diode	49
Cell Multi	17
Cell	2

Type of Anomaly	FilenameBox	Anomaly Score	Latitude
String	ZT2 IR Upload 1 (891).JPG_0.619.jpg	0.62	-28.41736412
String	ZT2 IR Upload 1 (495).JPG_0.619.jpg	0.62	-28.41798015
String	XT2 IR Upload 2 (81).JPG_0.619.jpg	0.62	-28.41695404
String	ZT2 IR Upload 1 (591).JPG_0.618.jpg	0.62	28.41777225
Cell Multi	ZT2 IR Upload 1 (763).JPG_0.617.jpg	0.62	-28.41756821
Cell	XT2 IR Upload 2 (17).JPG_0.616.jpg	0.62	-28.41715812
Diode	ZT2 IR Upload 1 (789).JPG_0.615.jpg	0.62	-28.41756821

POWERED BY esri

- Key considerations
 - Hardware and quality of imagery
 - Drone pilot skill and flight planning
 - Anomaly Detection Software and AI
 - Accuracy of results!!! can be a nightmare field staff
 - Integration of As-Built Documentation
 - Economic Development

Smart Glasses



Smart Glasses, Virtual and Augmented Reality

Scope
Travel on-site avoided
Other info

Specialized inspections – inverters
Discussion on fire cause & origin determination

Internal Enel teams (4 local O&M & 5 Remote) possibility of more technical inputs by different actors

9k€ of travel and accomodation avoided

Videos & pictures taken with SGs used for RCA

Remote Technical Assistance

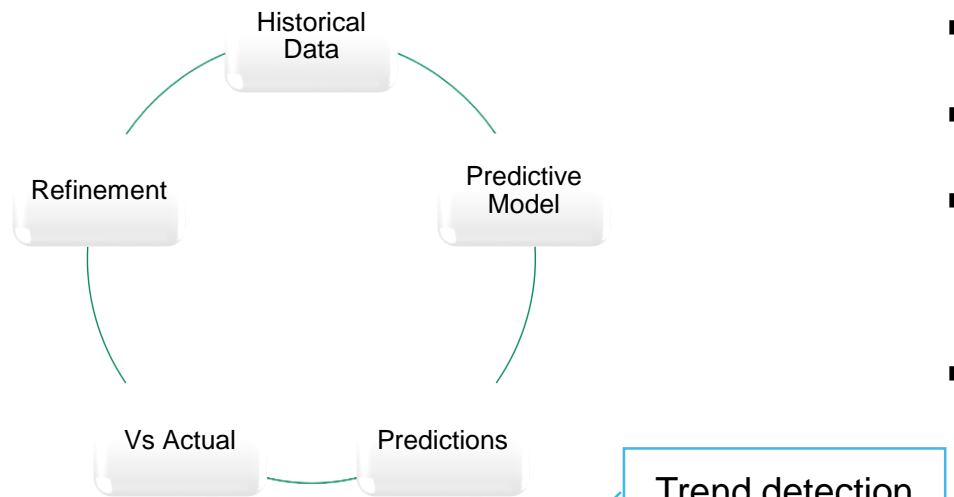
Field Inspections

Training

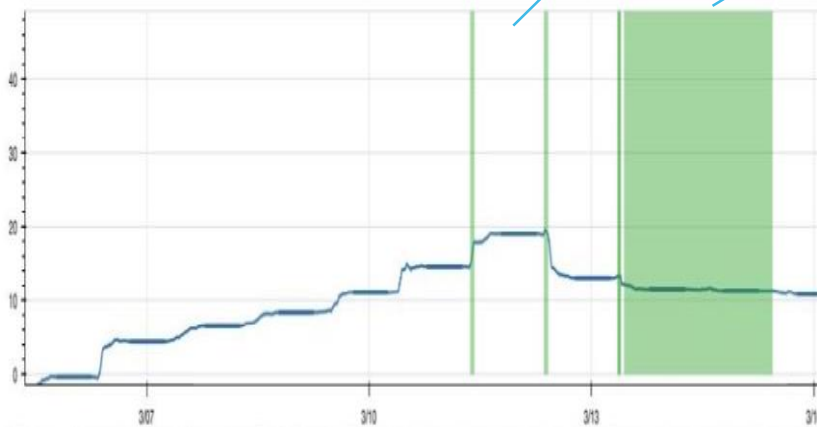
- Integration of augmented and virtual
- reality



Predictive Analytics



- Use of historical sensor data
- Failure and ERP records
- Predictive models – statistical, machine learning, pattern recognition, AI
- Value add: Controlled shutdown, salvage equipment



Digital Twin Technology



- Virtual model representation of a physical object's dynamics and operation
 - Component, asset, systems or process level
- Integration of real world sensor data onto digital model
 - Allows for simulation, performance analysis and performance improvement
- Uses
 - Gain insights into design and operation
 - Research and development, design, production and operations
 - *Operational efficiency analysis and improvement*
 - *3D training environment*



Thank you

